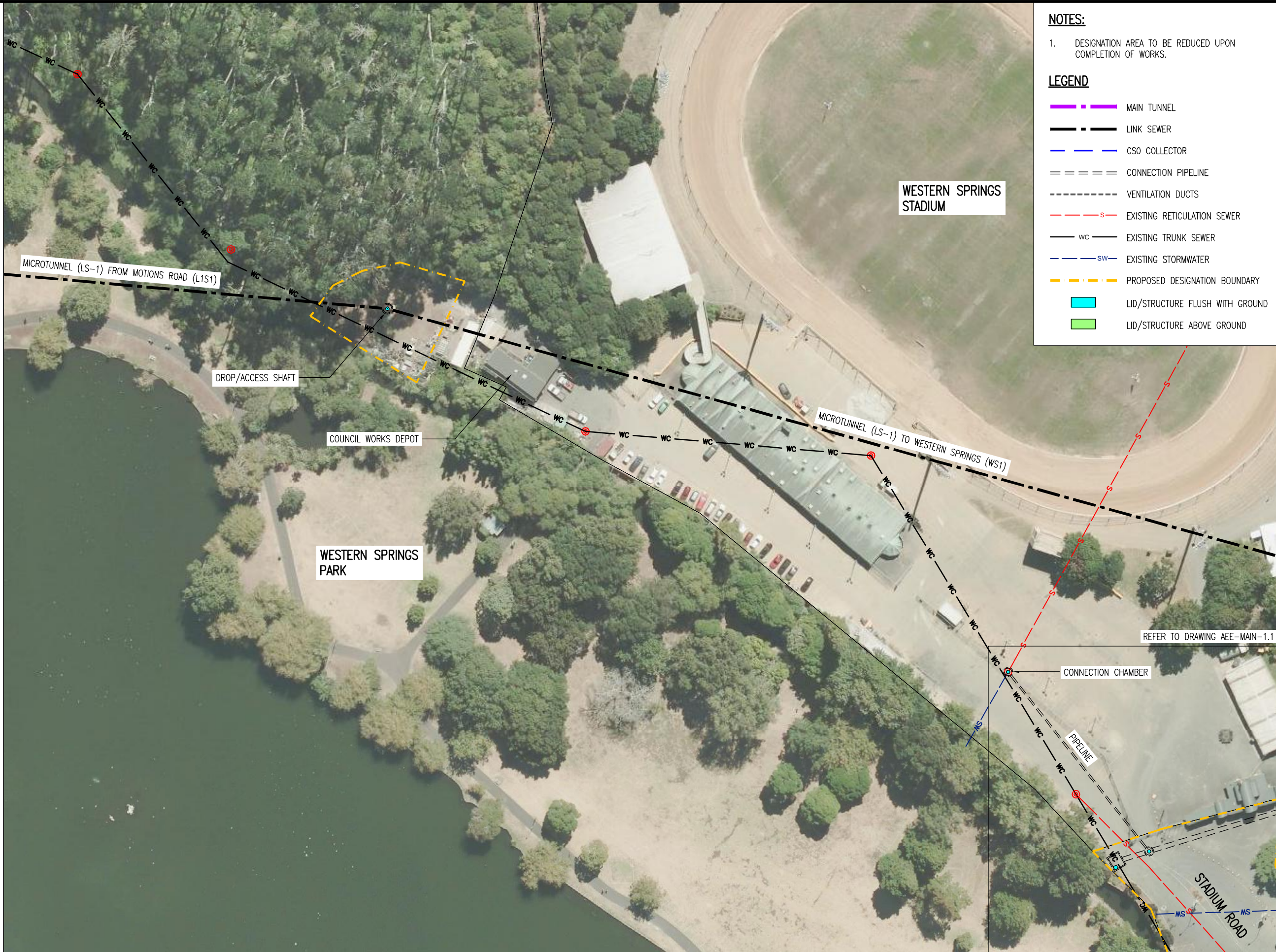


NOTES:

- DESIGNATION AREA TO BE REDUCED UPON COMPLETION OF WORKS.

LEGEND

- MAIN TUNNEL
- LINK SEWER
- CSO COLLECTOR
- CONNECTION PIPELINE
- VENTILATION DUCTS
- EXISTING RETICULATION SEWER
- wc --- EXISTING TRUNK SEWER
- sw --- EXISTING STORMWATER
- PROPOSED DESIGNATION BOUNDARY
- LID/STRUCTURE FLUSH WITH GROUND
- LID/STRUCTURE ABOVE GROUND



Plot Date: 10-Aug-12 9:32 AM
 File path: P:\0538 - Central Interceptor\04_Drawings\4.3_Working\AEE\AEE_Consept\General\DWG

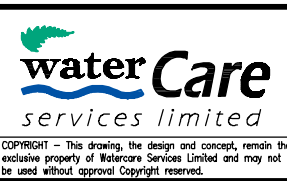
DESIGNED	NL				
DES. CHECKED	JS	<i>[Signature]</i>	08/12		
DRAWN	AP	<i>[Signature]</i>			
DWG. CHECKED	NL		08/12		
REV'D P.MGR	JS				
APP'D P.DIR	CC				
ISSUE	DATE	AMENDMENT	BY	APPD.	BY DATE
A	17/08/12	CONSENT ISSUE	AP	PR	APP'D P.DIR

OPERATIONS

SITE LAYOUT AND DESIGNS INDICATIVE ONLY AND SUBJECT TO CHANGE DURING DETAILED DESIGN DEVELOPMENT

ASSET MANAGER

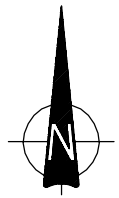
AEE AUGUST 2012



CENTRAL INTERCEPTOR GENERAL

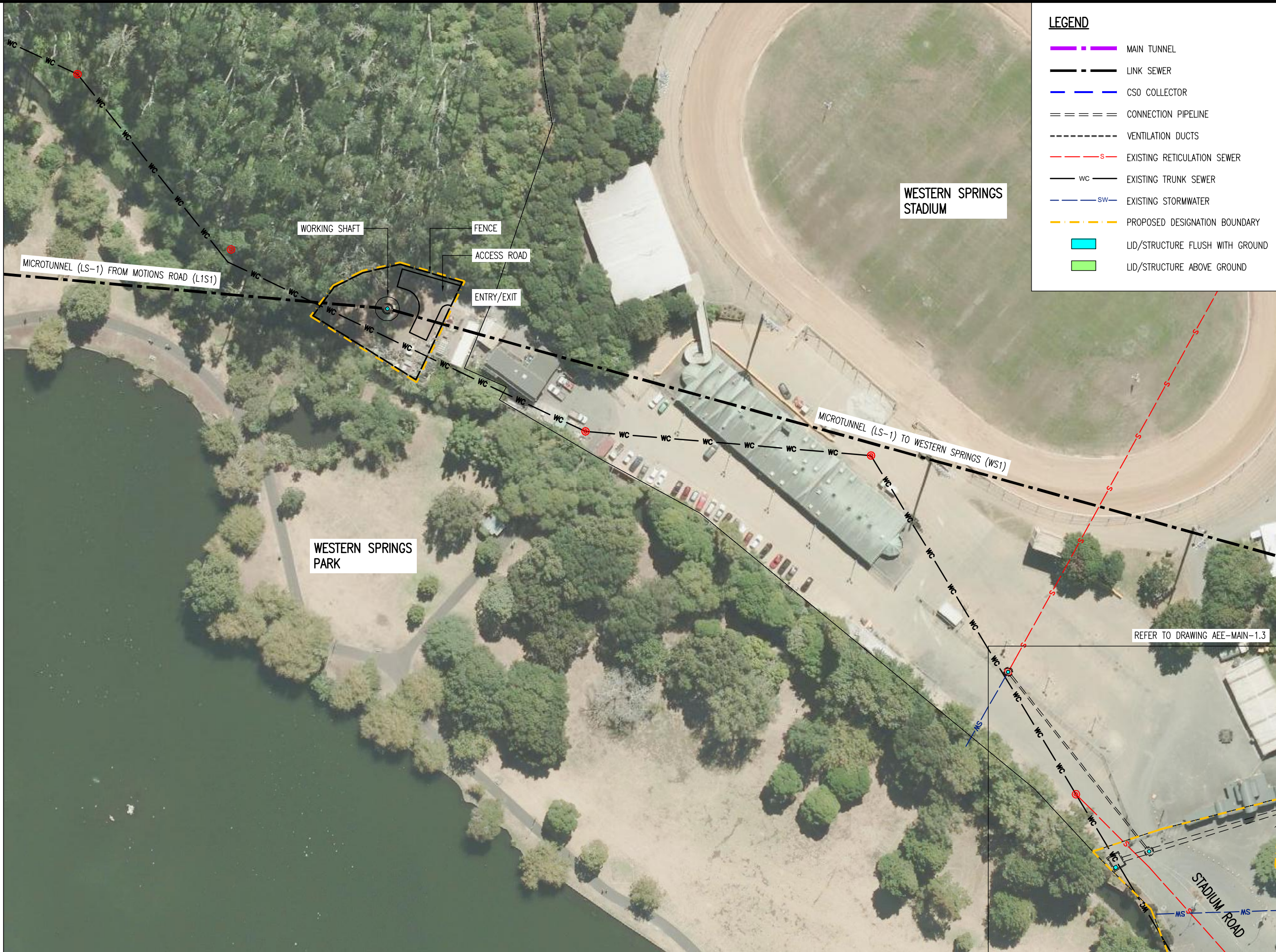
WESTERN SPRINGS DEPOT (L1S2) - PERMANENT WORKS PLAN

CAD FILE AEE-MAIN-12.1	DATE 26-Jul-12
ORIGINAL SCALE A1	CONTRACT No. 0538
1:1000 A3	
DRAWING No. AEE-MAIN-12.1	ISSUE A



LEGEND

- — — — — MAIN TUNNEL
- - - - - LINK SEWER
- - - - - CSO COLLECTOR
- = = = = = CONNECTION PIPELINE
- - - - - VENTILATION DUCTS
- - - - - EXISTING RETICULATION SEWER
- WC — EXISTING TRUNK SEWER
- SW — EXISTING STORMWATER
- - - - - PROPOSED DESIGNATION BOUNDARY
- LID/STRUCTURE FLUSH WITH GROUND
- LID/STRUCTURE ABOVE GROUND



Plot Date: 10-Aug-12 9:33 AM
 File path: P:\0538 - Central Interceptor\04_Drawings\4.3_Working\AEE\AEE_Consept\General.Dwg

DESIGNED	NL				
DES. CHECKED	JS	<i>[Signature]</i>	08/12		
DRAWN	AP	<i>[Signature]</i>			
DWG. CHECKED	NL		08/12		
REV'D P.MGR	JS				
APP'D P.DIR	CC				
ISSUE	DATE	AMENDMENT	BY	APPD.	BY DATE
A	17/08/12	CONSENT ISSUE	AP	PR	APP'D P.DIR

OPERATIONS

SITE LAYOUT AND DESIGNS INDICATIVE ONLY AND SUBJECT TO CHANGE DURING DETAILED DESIGN DEVELOPMENT

ASSET MANAGER

AEE AUGUST 2012



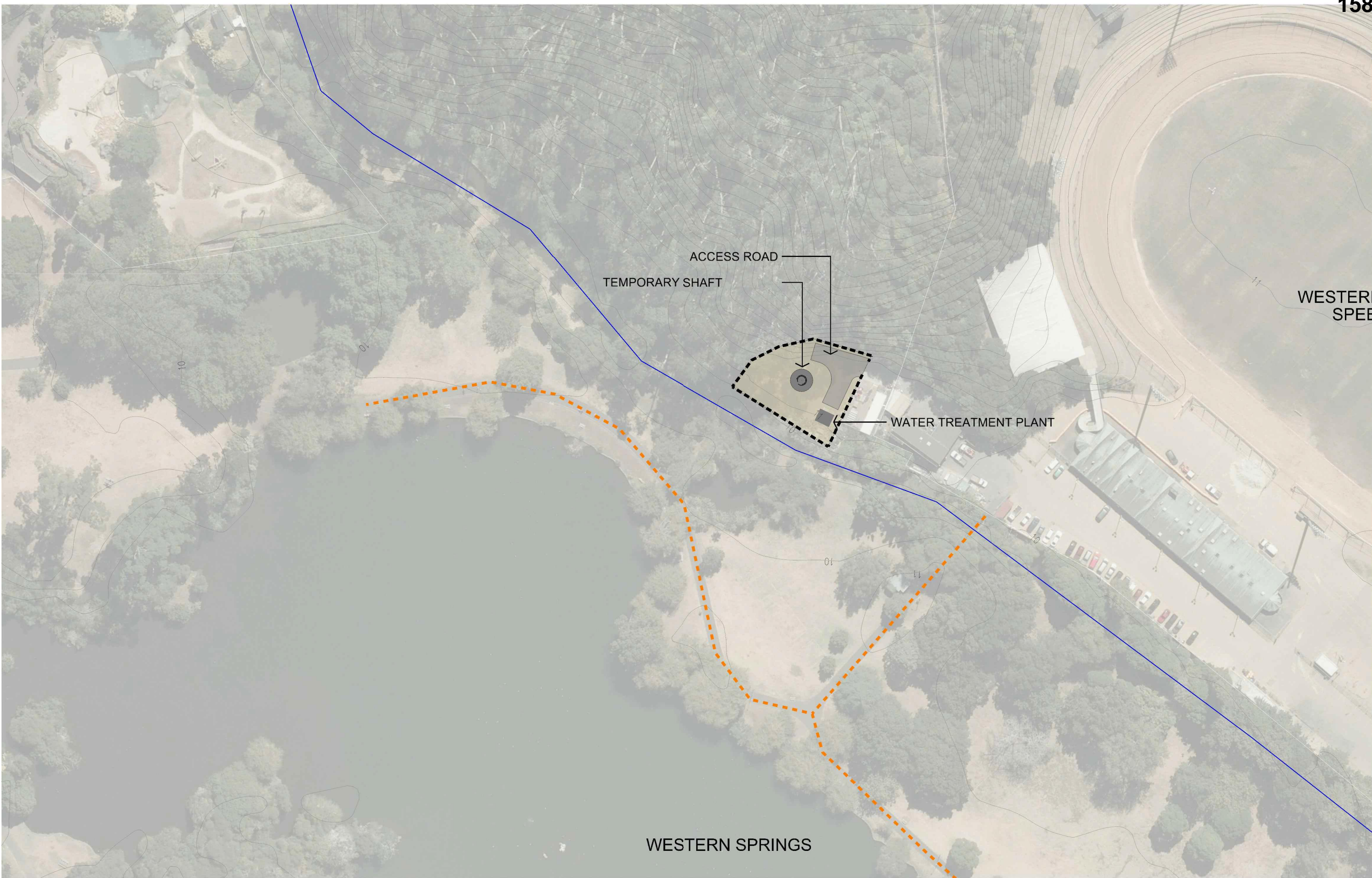
CENTRAL INTERCEPTOR GENERAL

WESTERN SPRINGS DEPOT (L1S2) - CONSTRUCTION WORKS PLAN

CAD FILE AEE-MAIN-12.2	DATE 26-Jul-12
ORIGINAL SCALE A1	CONTRACT No. 0538
1:1000 A3	
DRAWING No. AEE-MAIN-12.2	ISSUE A

Project No.

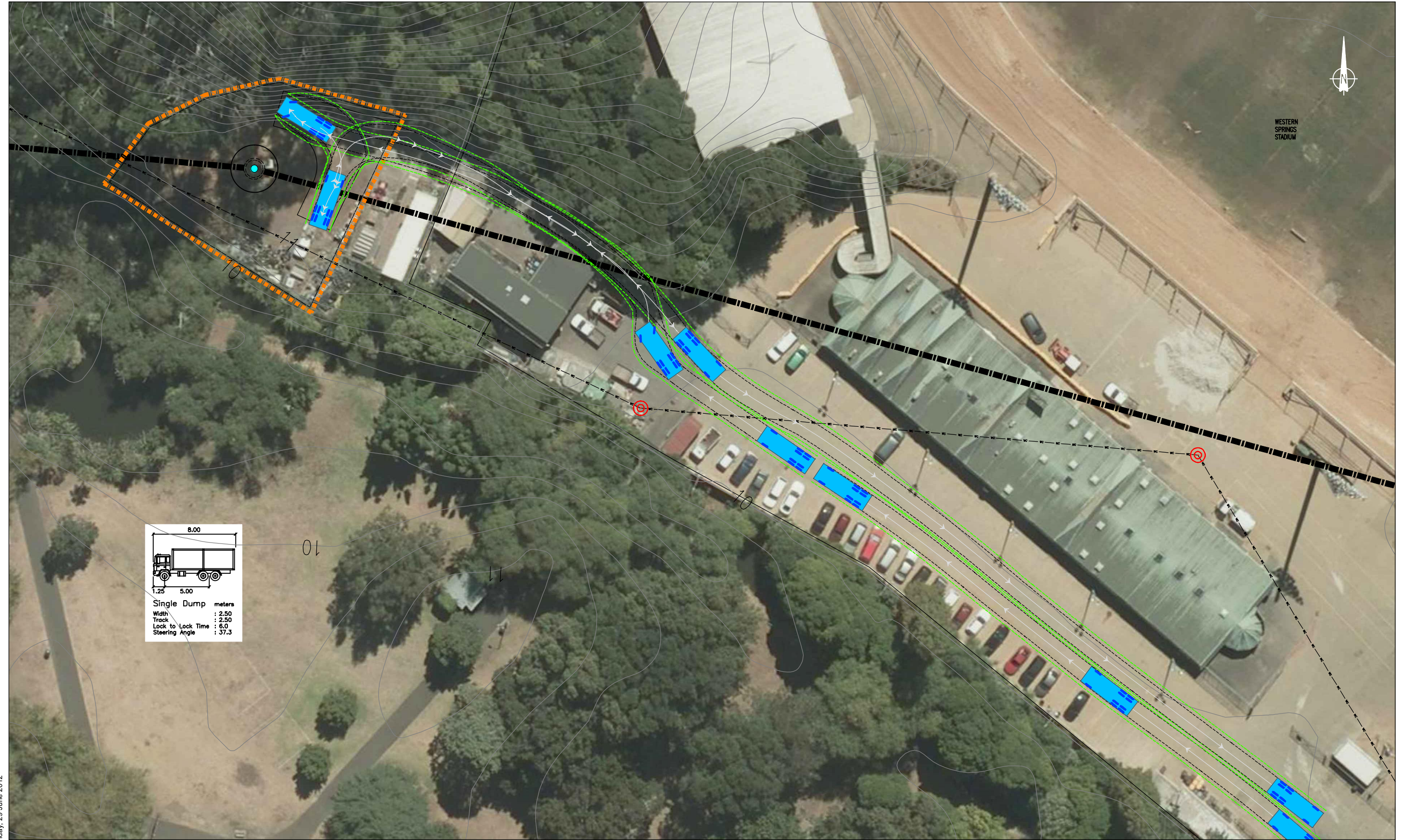




Note: Site layout indicative only. Final layout dependant on Construction Management Plan



Note: Site layout indicative only. Final layout dependant on Site Reinstatement Plan



Friday, 29 June 2012

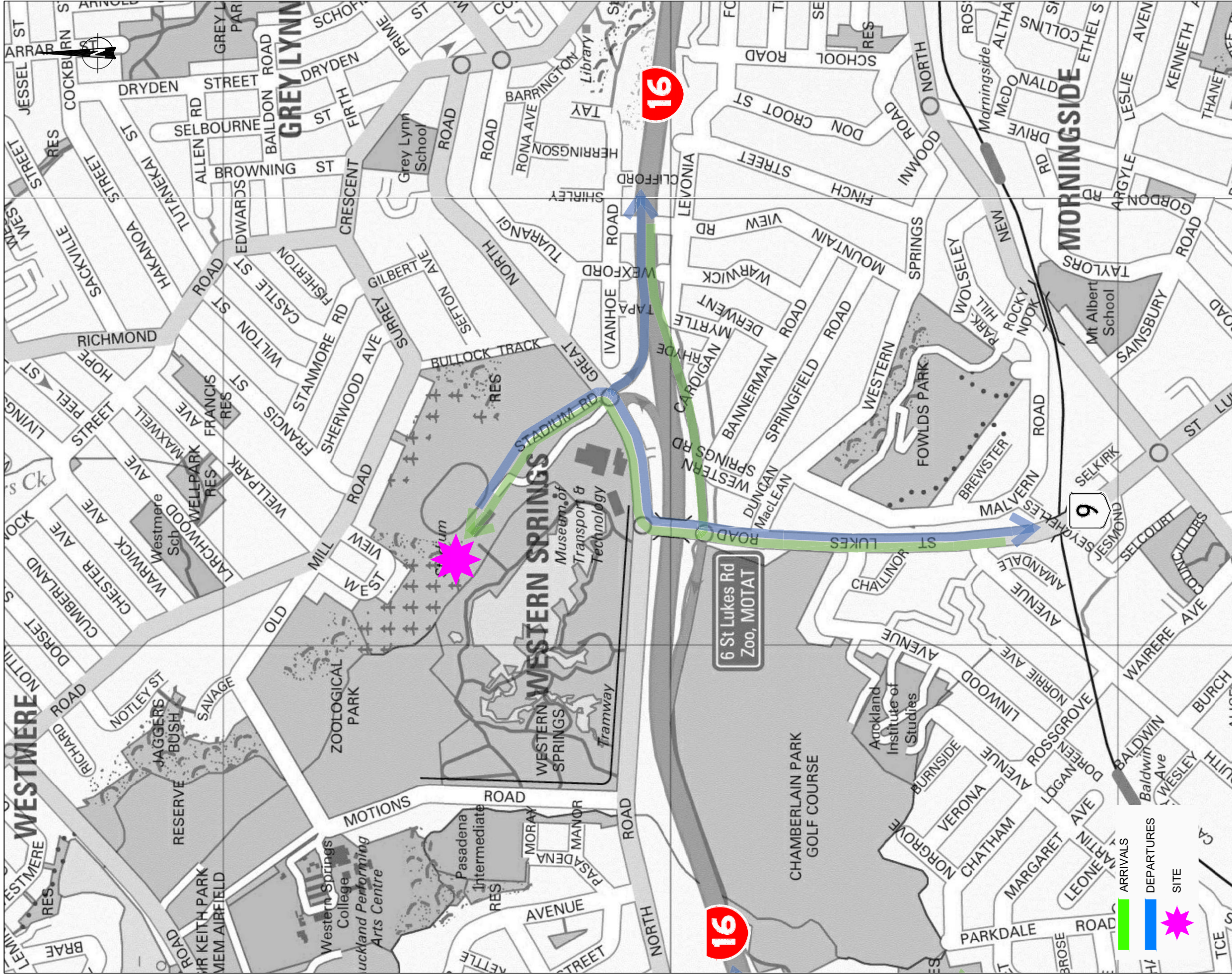
REVISION	DATE	DESCRIPTION
----	05.06.2012	Sourced from Watercare - AEE-MAIN-12.2.dwg

Watercare Central Interceptor
 Western Springs (L1S2) - Truck Tracking



DRAWN: SP
 DATE: 29.06.2012
 SCALE: 1:500@A3
 DWG NO:11117A12B





Tuesday, 24 July 2012

- ARRIVALS
- DEPARTURES
- SITE

Watercare - Western Springs Depot (L1S2)

Truck Routes

Traffic Design Group

23

SCALE: N.T.S